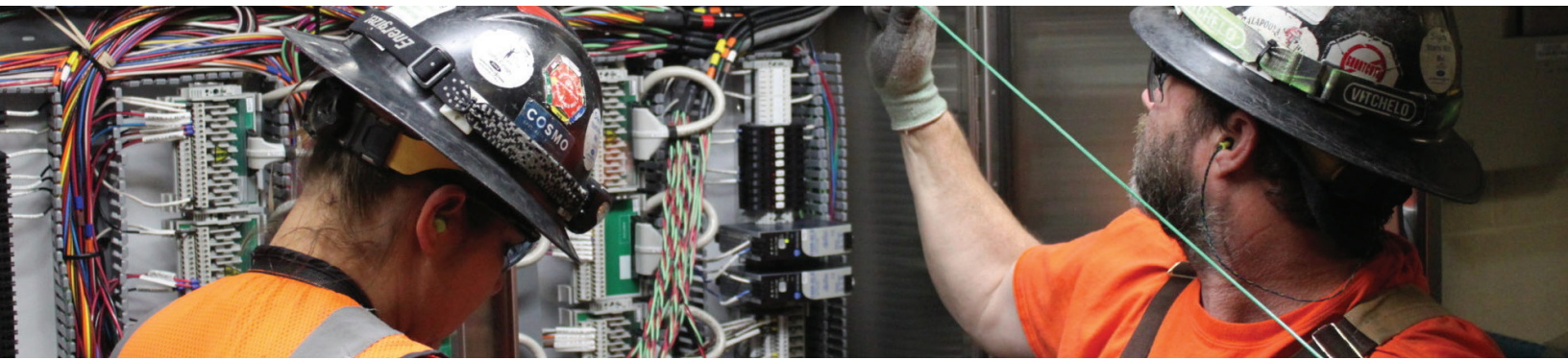


## SENECA SAWMILL - MILL "A" EQUIPMENT UPGRADE/INSTALLATION



**CLIENT**  
Seneca Sawmill  
Company



**LOCATION**  
Eugene, OR



**TIMELINE**  
May 2015 - Current



**DIVISION**  
Construction, Controls  
& Engineering



**VALUE**  
\$715,000

### OVERVIEW

In May of 2015, Olsson Industrial Electric initiated a mill expansion project for Seneca Sawmill in Eugene, Oregon. The expansion project incorporated multiple additions and upgrades. One of the additions was made to Mill "A." Olsson installed new conduit, wiring and associated electrical hardware for more than 75 motors on a new trimmer/sorter line. In addition, Olsson installed control wiring for two new edgers.

### SCOPE

- Furnished and installed new conduit and cabling for nearly all of the motors in the new trimmer/sorter line
- Installed control wiring for two new edgers
- Provided detailed one-line drawings, submittal reviews and as-built documentation

### HIGHLIGHTS

- Zero safety incidents while working in an active sawmill